

Seasons

by palash
2-3 BHK Flats | 3-4 BHK Penthouses

a project by Palash
'Seasons', Near Greenfields 3,
Near Bright Day School,
T.P. 3 - Vasna Bhayli Road, Vadodara.

Developers: P. S. Associates
+91 76220 22901/02/03
email: palashlifespaces@gmail.com
www.palashlifespaces.com

Architect: Ruchir Sheth, Design Studio
Structural Consultant: Ashutosh Desai, A.A.Desai Consulting Engineers
Plumbing Consultant: Pinakin Patel, Krupalu Consultant
Legal Consultant: Niramay Parikh & Associates
Visual Creative: Param Interactive

brochure design: stroke&arrow@98240 92110



Seasons

by palash
2-3 BHK Flats | 3-4 BHK Penthouses

“For everything there is
a season, and a time for every
matter under heaven:
a time to be born, and a time to die;

a time to plant,
and a time to pluck up what is planted;
a time to weep, and a time to laugh;
a time to seek, and a time to lose;

a time to keep silence,
and a time to speak;
a time to love,
and a time to hate!”

“For Everything there is a Season”
-By Daniel Reban

get
more

Your time in life has come to embrace happiness,
to attain what you have always desired for,
to achieve what you & your family truly deserve,
To love, and to be loved,
To 'Get More', more than most others get.

Because you took the Right Choice!



Seasons

(Sanskrit: ऋतु)

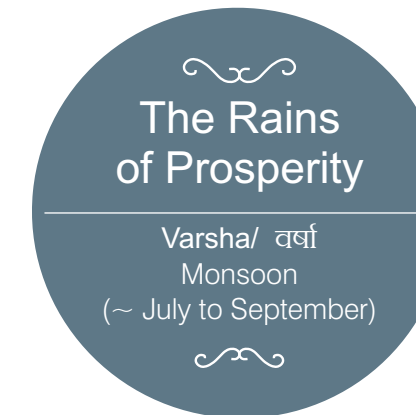
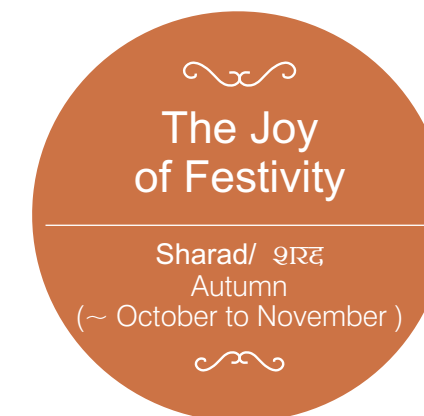
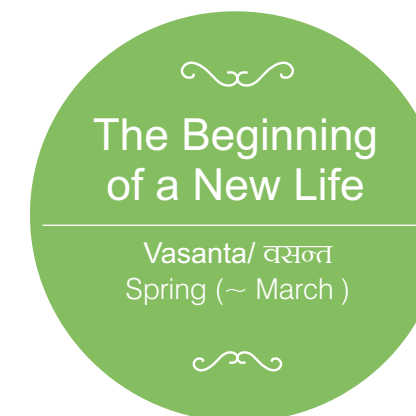
Seasons means "ritu" in the India calendar, and there are six *ritus* (also transliterated *rutu*).

The word is derived from the Vedic Sanskrit word *Rtú*, a fixed or appointed time, especially the proper time for sacrifice (*yajna*) or ritual in Vedic religion; this in turn comes from the word *Rta* (ठ), as used in Vedic Sanskrit literally means the "order or course of things".

Seasons are an integral part of our life. They change as per their time, and if you are with your loved ones in your dream home, you shall enjoy the joys of each season as they bring with them new hope, more happiness and a positive energy.

There are
6 Seasons
in a year.

At Seasons by Palash you get
so much more in every aspect of living
that you derive more happiness,
out of each living day of your life!





get more

- more living space
- more parking
- more large balconies in penthouse
- more ideal ambience for your family
- more value additions
- more security
- more ventilation & natural light
- more relevant leisure amenities
- more refined finishing
- more nature
- more value for your investment
- more value for your investment



The Beginning
of a New Life

Vasanta / वसन्त
Spring (~ March)

A favorite season of poets.
It is called the
queen of seasons. Krishna says in
the Bhagvad Gita that "in seasons,
He is Vasant".

Just like Vasant is a time to begin.
Your life begins on a new note when
you decide to shift over to Seasons.
Feel the positive vibes the moment
you enter the plush, green campus,
where everything is designed to give
you a sense of freedom and joy.

A life at Seasons is truly a life full of
happiness and bliss!





More Living Space

One of the most important aspects of planning at Seasons is our promise to offer a bigger space...both personal as well as shared spaces.

Unlike other apartment developments in Vadodara, we at Seasons stress on the importance of bigger, more airy rooms. They add more comfort, more energy to your life, besides giving you the luxury of a bigger space to enjoy life to the fullest!

The apartments at Seasons offer an excellent finish and best-in-class fixtures and fittings. Thus allowing you to move into a residential space that is stellar and contemporary.

More Parking

Most often, modern housing projects turn a blind eye towards the parking requirements of the residents. This causes chaos in the campus and gives a cluttered feel. It also leads to unpleasant situation amongst neighbours.

We at Seasons understand the importance of Ample Parking and hence offer enough parking spaces at the Ground Floor and Basement Levels. Thus offering convenience, and ease to the residents.



Grishma / ग्रीष्म
Summer (~ April to June)

The Grishma Ritu or Summers is one of the longest seasons, which is the hottest. A season when the children enjoy the summer vacation and adults find ways to keep cool.

It symbolizes warmth in relationships, living in a bright abode with your loved ones. A few important festivals during this season include the Vat Pournima, Rath Yatra and Guru Purnima.

The Warmth
of Love & Family



More Ventilation & Natural Light

Located in the green surroundings of Vasna Bhayli, your home at Seasons is full of natural ventilation and sunlight.

Doors and windows are strategically placed so that there is enough air circulation and ample natural light.

More Ideal Ambience for your family

Your family is growing, your children need more space, more like minded friends and neighbours, more space to play, more companionship...where else would you find it except Seasons. A well developed campus, which offers wonderful neighbours, from similar socio-economic class, thus allowing your family to relate with them better and build lasting relationships.

More Refined Finishing

At Seasons, we are committed to offer a stellar product. For us it is a passion to create a home that is perfect in all aspects. Care is taken at each level of construction to ensure your home is free of all flaws.

Our quality assurance team is involved in checking of each process, each material for its strength, durability and overall quality. This apart from the use of branded materials and fixtures ensure long lasting functionality.

More Security

Comprehensive 24 x 7 security system for a safe campus

Single Gated premises with CCTV Camera





Varsha / वर्षा Monsoon (~ July to September)

The monsoon seasons is called 'Varsha Ritu' when it rains in most parts of India. It is time for festivals like Raksha Bandhan, Krishna Janmashtami, Ganesh Chaturthi, Onam, etc.

The monsoon gives a relief to the dry vegetation, the heat of the summers goes away and overall it spreads a sense of happiness and prosperity. Similarly buying a home at Seasons shall bright nothing but sheer joy to your life.

The Rains
of Prosperity





More value for your investment

Your family will get a great place to live and you shall get a wonderful piece of real estate at a very attractive and competitive price.

With an excellent infrastructure and quality, you shall reap rich returns on your investment in the future.

And that too, without cutting corners and without compromising on quality. Because we look at the long term, building quality, delivering value & creating an everlasting relationship.

Contact us for:
Attractive Price Offers
Express Payment Offers
Loan Assistance
Interiors
& much more!



More Brands, More surety of quality

At Seasons we make sure that only standard and well known brands which has a legacy of trust and reliability are used.

This ensures that you get to enjoy a hassle free living. Apart from extended and continued performance and whatever warranty those brands offer.

So your home at Seasons is fitted with branded materials inside out. For the materials you can see as well as in the concealed building materials.



Disclaimer: Uncertain availability conditions may lead to use of similar quality or better brands.

The Joy
of Festivity

Sharad / शरद
Autumn (~ October to November)

Sharad Ritu is characterized by clear skies. The nature is at its benevolent best and the oppressive heat of the summer is a distant memory. It is the season of festivals marked by benevolence, grace and beauty like Navratri, Vijay Dashmi, Sharad Purnima etc.

Just like Sharad brings festivals, your life at Seasons shall be in full bloom. Like minded neighbours, a picture perfect campus, joyous festival celebrations at your home and campus, and a celebration like atmosphere all through the year!





More Relevant Leisure Amenities

For us making a routine clubhouse with stock amenities was a definite NO. We dwelled into the deeper aspects of what entertainment facilities are genuinely used by the residents and are practical to maintain.

To make life a true celebration, Seasons offers a host of relevant leisure amenities which include:

- Basement Swimming Pool
- Relaxation Room
- Children's Play Area
- Senior Citizen's Sitting with designer benches
- Lounge
- AC Gymnasium
- Indoor Games Room





Basement Swimming Pool

With Vadodara's hot and dusty climate, a basement swimming pool allows residents to maintain the pool easily. It also lets them enjoy the pool even during the harsh summers - not letting them get tanned, besides providing privacy for the fairer sex.



~ ~ ~
The Bloom
of Floral Colours
~ ~ ~

Hemanta/ हेमन्त
Fall Winter (~ November to December)

Hemant is the season which lies between Autumn and Winter, & sometimes also called as pre-winter season. Moderately cold, but pleasant with occasional sunshine, it brings the best of nature. A few important festivals during this seasons include Bihu, Deepavali, Kartik Poonima.

At Seasons, we bring nature's color to your lives all round the year. With green vegetation all around the campus, to delightful terrace development. Even the balconies in the penthouses are designed such that potted plants can be placed and you can enjoy the outdoors.



More Nature

Terrace Garden & Jogging Track

The terrace garden is a delightful feature at Seasons. Get a picture perfect venue to spend the evening alone with a book, or with family. Use it to sit and relax or to jog around. With comfortable sitting provided on terrace it is a great place to spend time or even work. The plantation on the terrace also helps reduce the heat absorption in the building. Thus reducing the energy consumption to cool your homes in summers.

Large Balconies in Penthouse

The flats have balconies from where you can enjoy the greenery downstairs.

And the Duplex Penthouses offer double level garden of almost 400 sq. feet, which can be used as a personal garden. Enjoy the nature coming into your home!





AC Gymnasium

No need to travel long distances to stay fit. Seasons shall have a fully equipped AC Gym at arm's length. The exercise and fitness machines for professional quality shall help you workout, at your convenient time.



Relaxation Room

A first of its kind in Vadodara, we at Seasons have come with an idea of a relaxation room in the campus. Fitted with air-conditioning, designer lighting and flooring, it shall have massage chairs and soothing music to help you de-stress after a hard day's work.

Other Leisure Amenities

Children's Play Area

A place exclusively for children to frolic and enjoy the outdoors. Specially chosen rides and slides/swings would be placed which enable children to indulge in physical activity, helping them in their physical development in a safe, secure environment.

Senior Citizen's Sitting with designer benches

The garden shall have an area for senior citizens to sit and interact with their peers. To relax in an serene environment.

Indoor Games Room

Choose from table tennis, carom, air hockey, board games and many more in an air-conditioned environment at the Indoor Games Room. A perfect venue for sporting activity during the harsh summer heat.

Lounge

A lounge in the clubhouse shall have comfortable sitting where the members can interact with their friends and family. It could also be used for a small get-together.



Shishira / शिशिर

Winter (~ December to February)

Characterized by mild to severely cold temperatures, Shishira or Winter brings with it a desire to feel cozy in your home.

What better way to enjoy the cold winters than being in your 'OWN' home with your loved ones, in a plush ambience that is truly enriching, graceful and delightful.

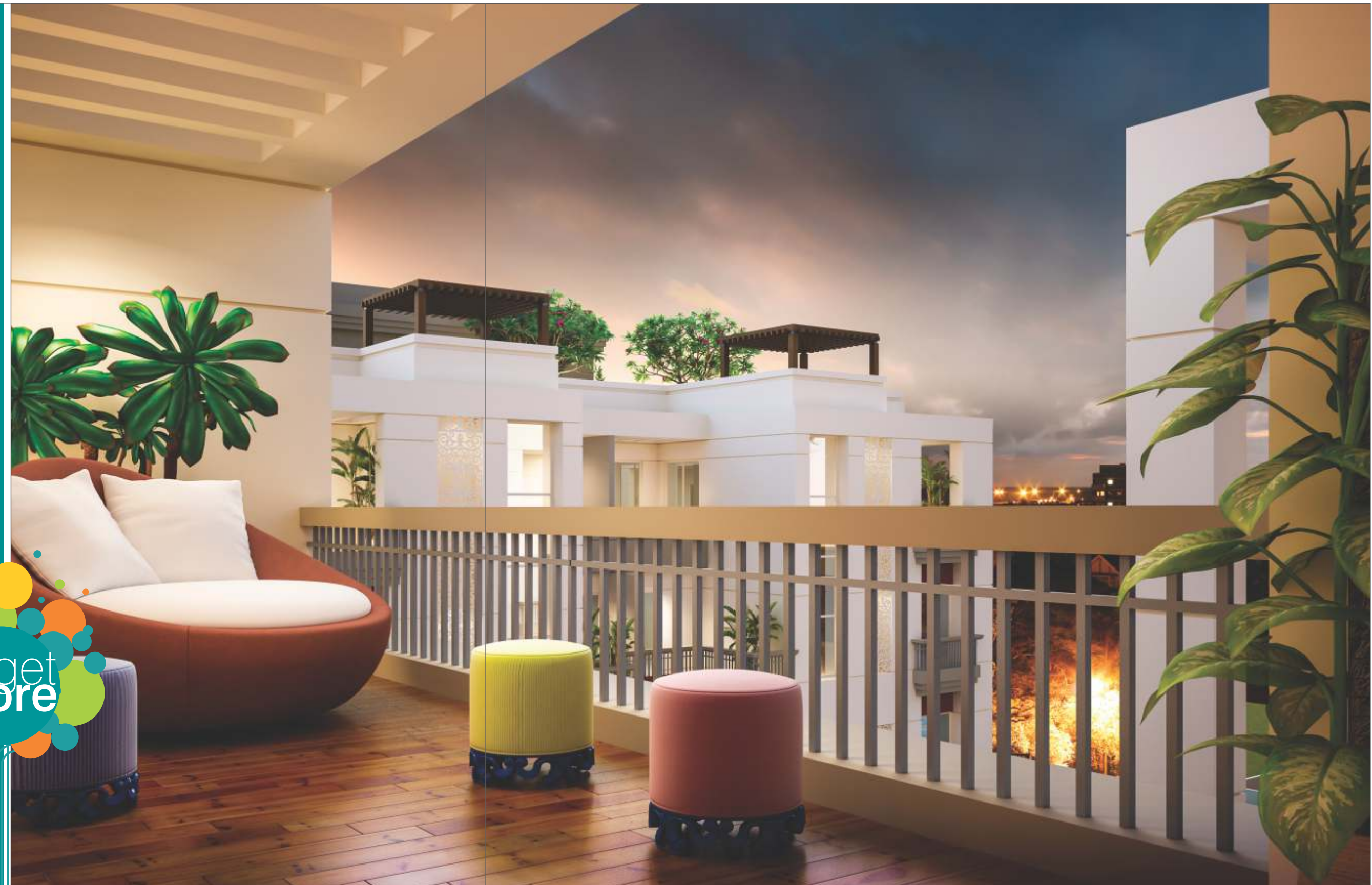


The Comfort
of a Cozy Home



More Value Additions

- 24 hours water supply in each flat
- Underground cabling for a wire-free look
- Anti-termite treatment
- Elegant name plate & notice board for each tower
- Tremix concrete internal road with tree plantation & streetlights
- Back-up Generator for common areas & lifts
- Free Parking (Ground & Basement Level)
- Automatic Lift with power backup



More Detailed Specifications

Structure

- Earthquake resistant RCC frame structure

Door

- Main Entrance Door: Decorative, extra wide door with designer handle
- All Other Doors: Laminated flushed internal doors with locks for all bedrooms & toilets

Walls

- Flyash / Clay Bricks

Kitchen

- Granite Top with stainless steel sink.
- Ceramic tiles upto lintel level over the kitchen platform. Wash area with ceramic tiles dado.

Roof

- Reinforced Concrete Roof with Water-Proofing System.

Bathroom

- Moisture resistant plaster finish with emulsion paint.
- Premium branded CP fittings, plumbing fixtures and sanitary ware.

Flooring

- All Rooms: Vitrified Tiles.
- Bathroom, Balcony, Wet Kitchen: Anti-skid Tiles.

Wall finishes

Internal Wall:

- All Rooms: Birla White/ JK cement Putty with acrylic washable distemper.
- All Bathrooms: Premium Vitrified Tiles laid up to lintel level.

External Wall:

- Sand faced plaster / Mala Plaster, painted with weather resistant Apex Paint.

Waterproofing

- Waterproofing on floors of Bathrooms, Kitchen, Wet Kitchen, and Reinforced Concrete Flat Roof.

Electrical

- Concealed Electrical Wiring in conduits.
- Premium Modular Switches.
- Provision for TV & telephone points at convenient locations.
- All bathrooms with electric geyser point.

Windows

- Specially designed and manufactured hi- quality colour anodized aluminium sliding section windows.





More Top-Up Options in Specifications

Apart from the standard specifications, we also offer premium options which would lead to creation of a premium living space for you. Choose from the below mentioned Top-Ups to jazz up your new home.

Also feel free to contact us for customization options and interior design assistance.

Item	Standard	Luxurious
Flooring	600x600 Ivory	800x800
Wooden Flooring	No	In Bedrooms
Sanitaryware	Premium quality	Euro / Hindware
Bath Fittings	Jaquar / Aqueel	Roca / Kohler
Electric Switches	Greatwhite Myra	Schneider
Platform	Granite Finish	Corian finish
Kitchen Sink	Premium Quality	Nirali or equivalent
Video Door Phone	No	Yes
Mosquito nets in Window	No	Yes



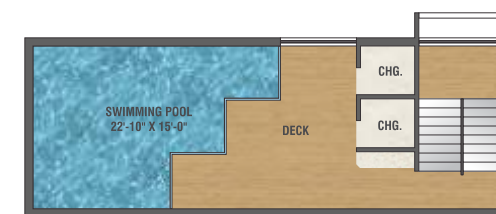
Layout Plan



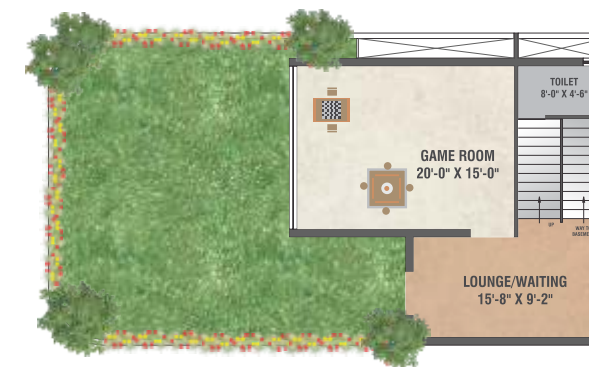
3 Level Club House



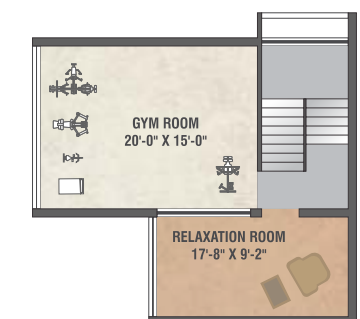
Basement floor plan



Ground floor plan



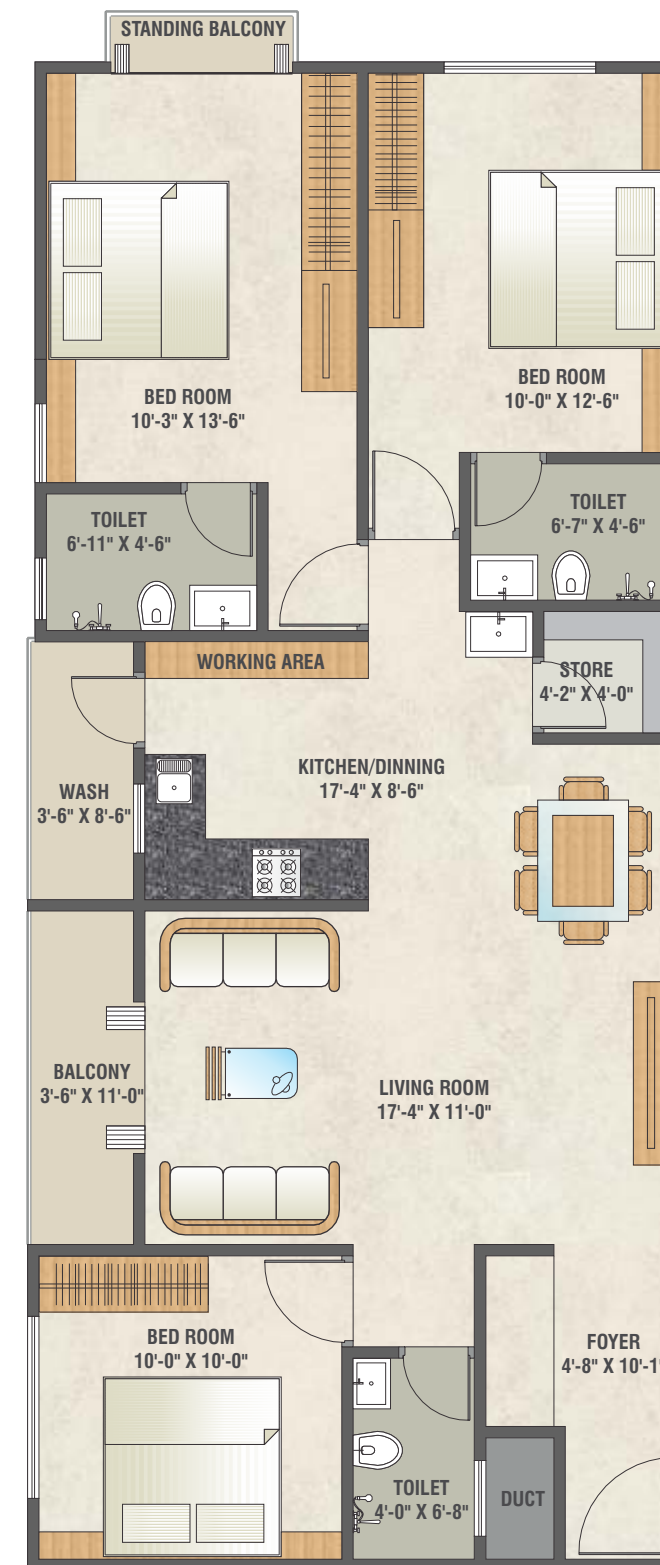
First floor plan



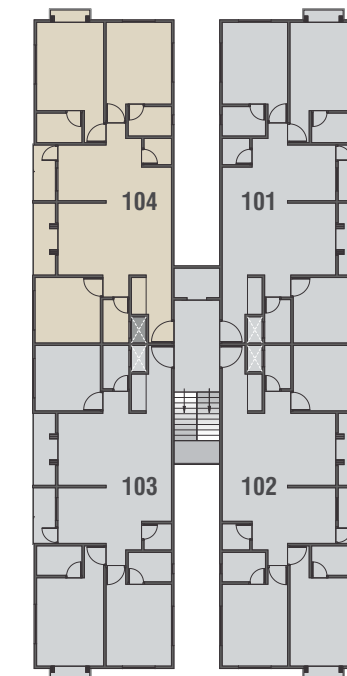
2 & 3 BHK Apartments 3 & 4 Duplex Penthouses

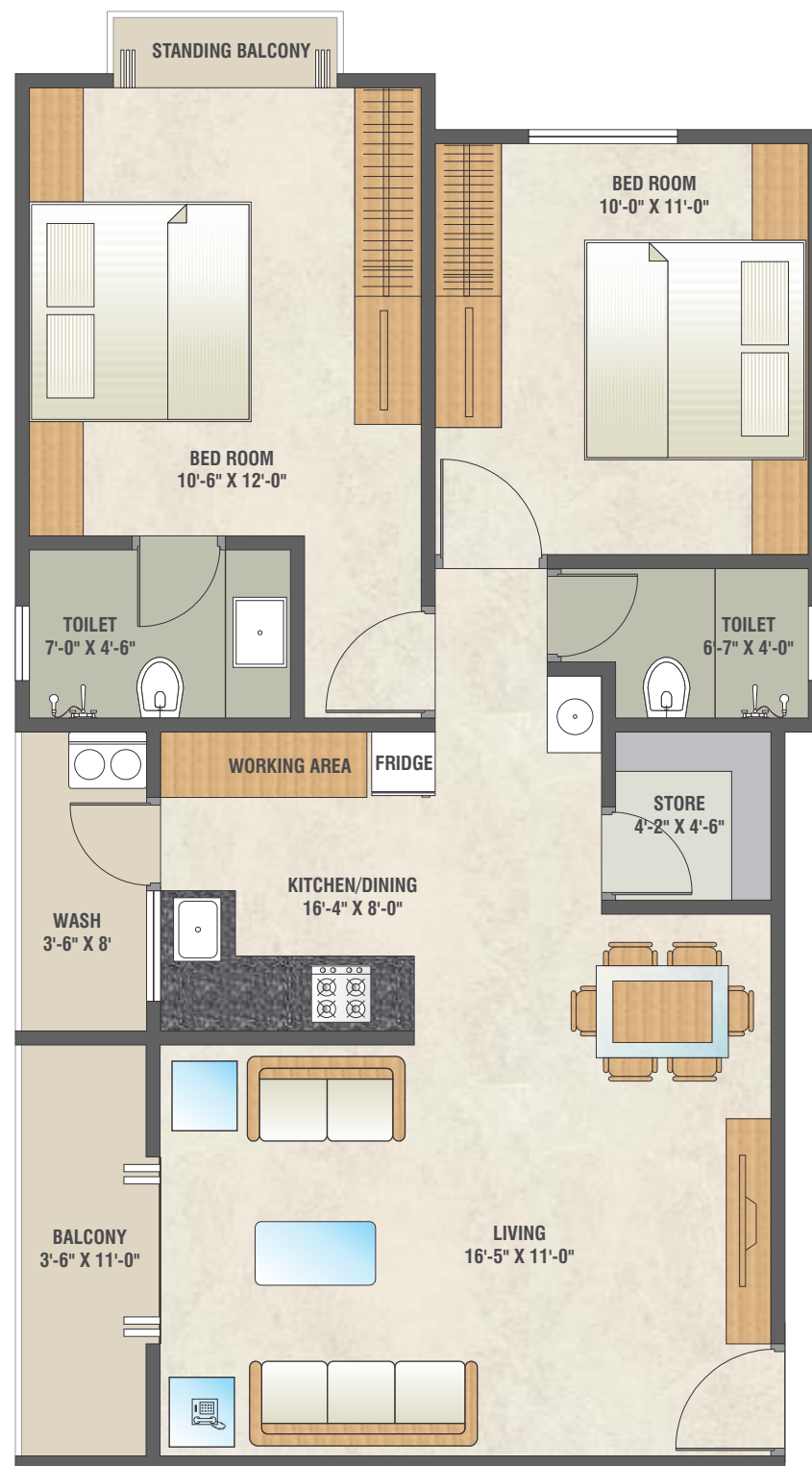
At Seasons the planning has been done with utmost care so as to create maximum living space per unit. Also the planning reflects our desire to create comfortable living spaces which shall enhance the quality of life for the residents,

Choose from multiple layout & area options available in different towers. One of them would surely match your distinct needs.

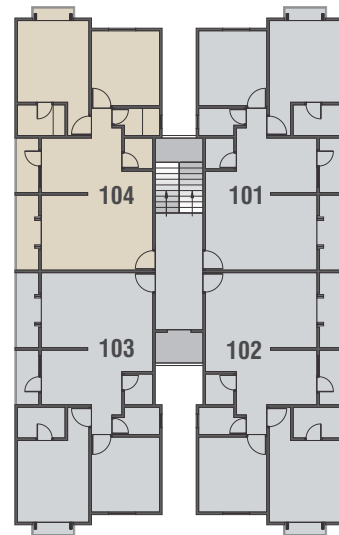


*Tower - A
Typical Plan*

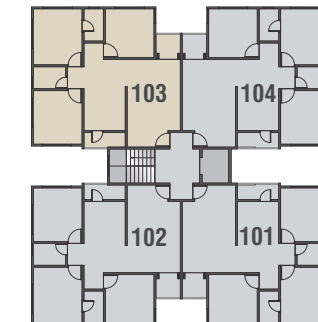




*Tower - B&D
Typical Plan*

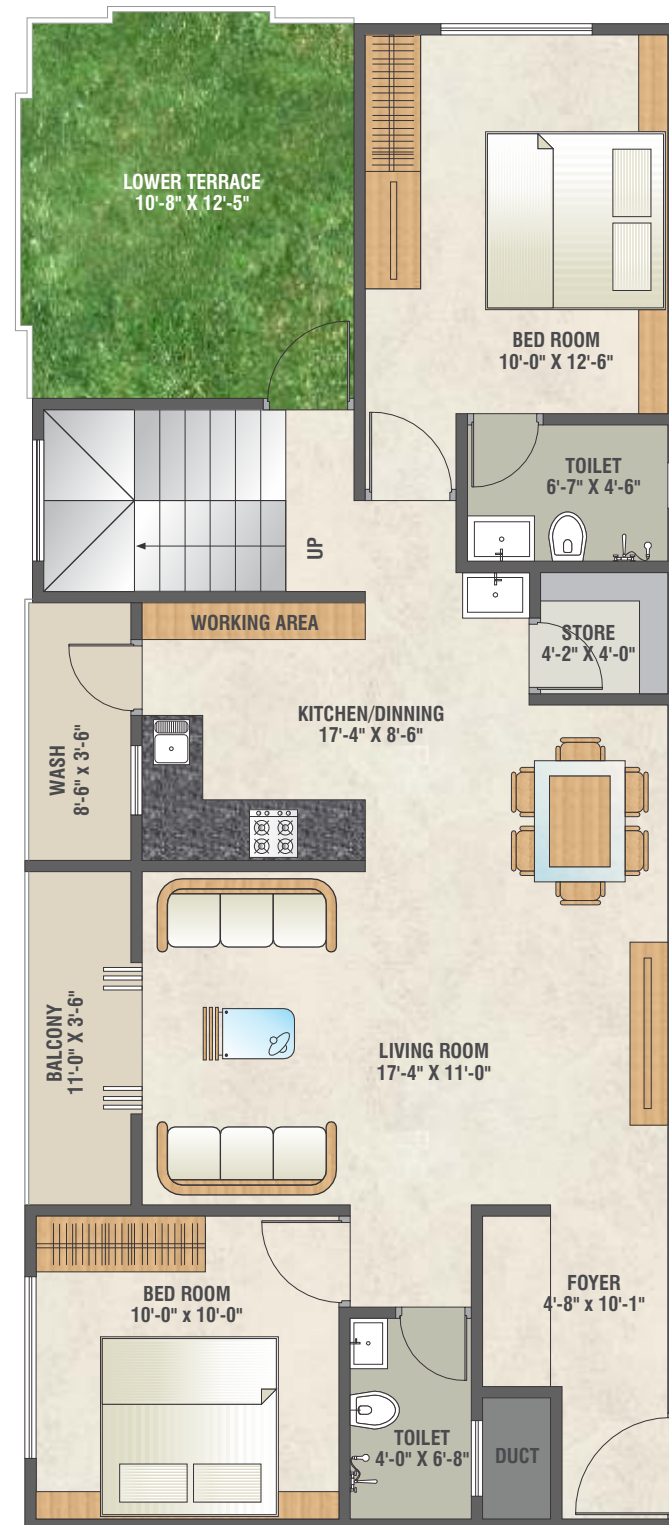
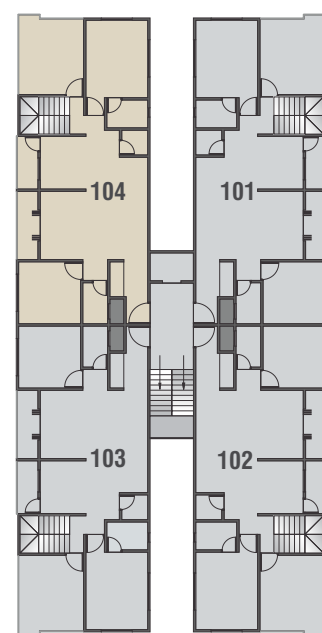


*Tower - C
Typical Plan*

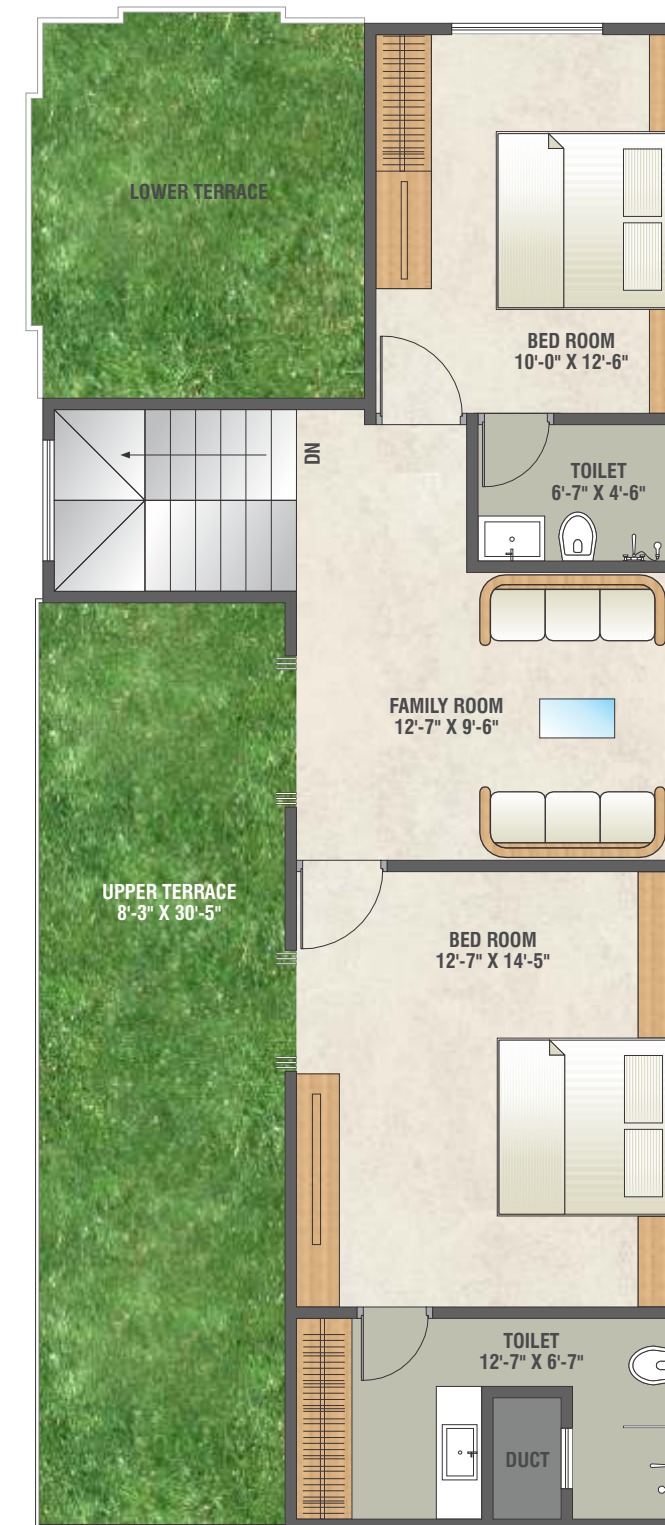
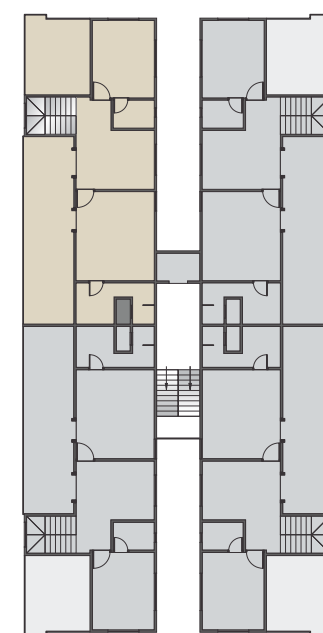


Tower - A

Lower Pent House

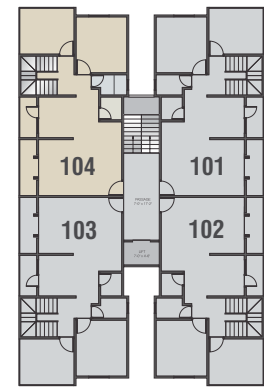


Upper Pent House

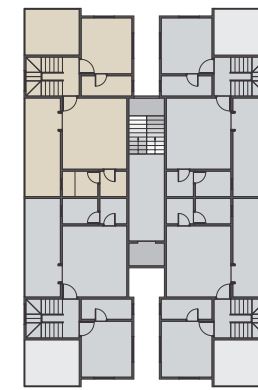


Tower - B&D

Lower Pent House

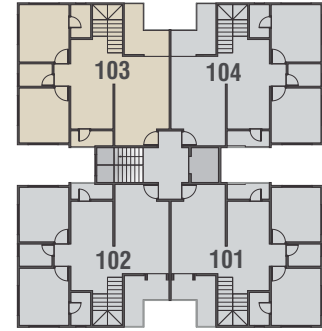


Upper Pent House

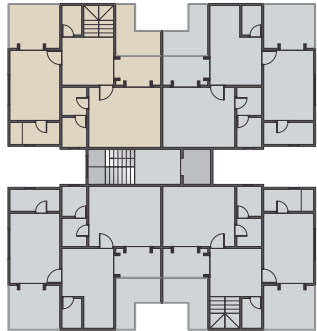


Tower-C

Lower Pent House



Upper Pent House



Are you ready to live your life... KING SIZE?
Give your family a gift so BIG,
it shall last them a lifetime!

Be ready to GET MORE!



Seasons
by palash

Seasons
by palash
2-3 BHK Flats | 3-4 BHK Penthouses

Payment Schedule : Booking Amount 15% | Plinth Level 25% | 1st Slab 15% | 3rd Slab 15% | 5th Slab 15% | Masonry Level 10% | Flooring 05%

Terms & Conditions:

Booking of Flat shall be confirmed only after 15% payment. Rs 51,000 Offer is only taken as Token and remaining payment must be made as per payment schedule. Possession will be given after one month of settlements of all accounts & subject to status of construction. Each purchaser will bear municipal taxes from the date of sale deed. Cheque bounce incidents / Continuous default in payments leads to cancellation. In case of cancellation the booking amounts will be refunded only after booking of same flat and after deducting Rs. 25,000/-. The developers will not be responsible in case of delay in water supply, electricity connection, drainage works by authority. All members must essentially be the part of the society formed by the association of members & shall abide by the society by laws. Developers shall have all rights to change, raise the scheme or any details herein and any revision will binding to all. Change in elevation of any kind is not permitted. The following shall be charged Extra: 1) Stamp Duty & Registration Charges, 2) Service Tax, VAT, any such additional Govt. Taxes, 3) Maintenance Deposit, 4) Electrical deposit and meter charges. Internal Changes would be permitted with prior permission only. Changes which do not affect the structural design shall only be permitted. No elevational changes shall be permitted. 3D views are for general idea only, actual product may differ. Changes in planning, amenities, facilities and maintenance charges shall be binding to all members. The outdoor units of AC shall be placed only in the designated place as per architect's plan. Any balance FSI at present or in future shall be availed by the developer and no member would claim any right for the same. Rights of Terrace & Terrace Garden would be with developers only. Terrace Garden is a Free Service provided by developers. This brochure is for information purpose only. It does not form a part of agreement or any legal document. The developer retains the right to alter the specifications without consent of the member.

